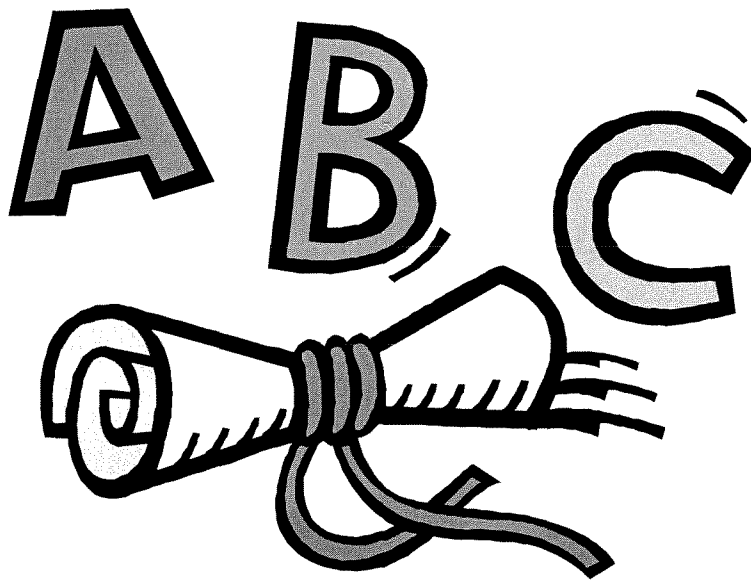


# EAST ALLEN COUNTY SCHOOLS

## HEALTH SERVICES



Kindergarten Enrollment

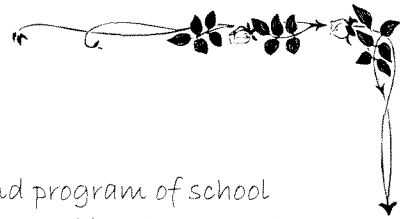
HEALTH INFORMATION

**EACS**

EAST ALLEN COUNTY SCHOOLS

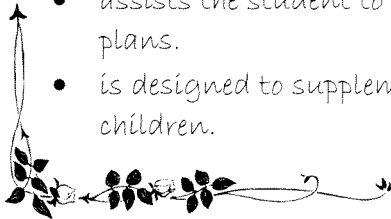
DREAM IT. DO IT.

**2018-2019**



## THE OFFICE OF HEALTH SERVICES

- provides professional leadership to develop and implement a sound program of school health in accordance with Indiana State Law and the policies approved by the East Allen County Schools Board of School Trustees.
- assists the student to maintain an optimal state of health to enhance his or her educational plans.
- is designed to supplement, not substitute for, the health care parents should provide for their children.



Your child will get the most of his/her school day with a positive beginning at home. Parents, build your child's self-esteem by teaching good hygiene practices such as, bathing regularly, shampooing hair, and brushing teeth. Encourage healthy habits such as a good night's rest and a well balanced diet every day. Be sure your child leaves home dressed comfortably and appropriately for school and weather conditions.

Providing a strong, healthy foundation will support your child in years to come.

Starting kindergarten should be fun and exciting. The the Registered Nurses and Health Care Aides of **East Allen County Schools**, Health Services, are available to make this new life experience healthful and secure.

### The School Nurse...



...assists your child if ill or injured.

...performs screenings to identify potential problems with vision, and hearing.

...offers preventive health education and programs.

...provides support and education to children with acute and chronic health conditions.

...will make referrals to community services.

...is part of the educational team helping students to reach their academic goals by promoting health and safety.

## EMERGENCY INFORMATION

Our link to home and family is a complete and accurate **Student Emergency Information** form (Hs-9).

If a student becomes ill or is injured during the school day, the school will call the parent or guardian home, cell, and work numbers provided on the **Student Emergency Information** form and/or as noted on the RDS Parent Access. If the school cannot make contact with the parent or guardian, an emergency contact person will be called.



**Emergency contacts** are family members and/or friends the parent or guardian would entrust with their child. *Emergency contacts should live a short drive from the school and be available during the school day to pick up sick or injured students.* You are encouraged to have more than one emergency contact person.

The school **will NOT release** students to anyone other than listed on the **Student Emergency Information** form or noted on the RDS Parent Access without parent or guardian permission. *Student safety is a priority!* However, if none of the emergency contacts are available, and a serious medical emergency exists requiring medical treatment beyond what is provided at school to maintain safety and/or life, students are transported by EMS to the hospital noted by the parent or guardian on the **Student Emergency Information** form or noted on the RDS Parent Access. If no hospital preference is noted, the student will be transported to the nearest hospital for emergency care.



***UPDATE! UPDATE! UPDATE!***

Phone numbers and emergency contacts change...  
...please keep the school informed.

Family is most important to a sick or injured child.

If your child has a chronic health condition, or requires daily medication(s) given at home or to be given at school, note it on the **Student Emergency Information** form. Knowing specific medical history about students helps ensure their health safety while at school. During the school year, please call the school nurse to keep the school current concerning your child's health status and medications.

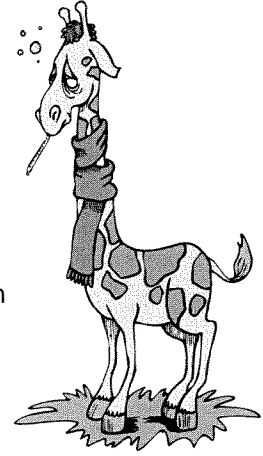
## HEALTH SERVICES

# STUDENT ILLNESS AND INJURY POLICY

### Illness

For the sake of other children's health, your child should NOT attend school if he or she:

- ✓ has a morning temperature of 99° or afternoon temperature of 100° (or above)
- ✓ is vomiting and/or has diarrhea in the morning or during the night
- ✓ has a rash, whether it is itchy or not
- ✓ has a communicable disease such as chicken pox, or a bacterial or fungal infection such as conjunctivitis (or pink eye), impetigo, and/or ringworm
- ✓ appears obviously ill with or without a fever
- ✓ persistent cough and or persistent runny nose

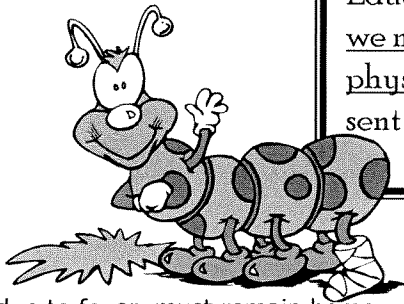


If your child becomes ill at school with any of the above indicators, you (or an emergency contact person) will be called to pick-up your child. Sick children are NOT sent home on the bus.

### Injury

To keep parents informed about the cause and anticipated outcome of an injury, phone calls or notes may be used to alert parents of an injury that may require more than minor first aid.

If you prefer your child to remain in the school building during recess and/or not participate in Physical Education class for more than one day, we must have a note from your physician. This form may be faxed or sent to school.



### RETURN TO SCHOOL POLICY

Children kept home from school due to fever, must remain home until fever-free for 24 hours without the aid of medication such as Tylenol or Advil. Please check your child's temperature later in the day as many fevers "spike" after noon.



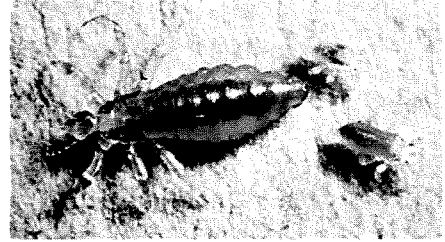
Children who are vomiting or have diarrhea **MUST** stay home until they are symptom free for **24 HOURS.**

Pinkeye, and impetigo (oozy, crusted rash on nose or mouth), are contagious and must be treated by a doctor. Students may return to school after 24 hours of antibiotic therapy and with a doctor's note.

Ringworm (red scaling, circular lesions) is also contagious and must be properly treated by a physician. A doctor's note is encouraged. Lesions may be covered while student is at school.

## HEAD LICE

**WHAT ARE HEAD LICE?** Lice are pests in nature, like fleas and mosquitoes. However, lice live on the human scalp and lay eggs on the hair shaft. A louse is a grayish-tan, flat insect about 1/16 to 1/8 inch long (about the size of a sesame seed), with six legs. They cannot fly or jump. They can crawl at a speed of one inch per five seconds.



**HOW DO YOU GET HEAD LICE?** Because head lice feed by burrowing in the scalp for blood, they are usually transmitted from one infested person to another by direct contact. After feeding, the live lice may cling to personal items such as COMBS, BRUSHES, TOWELS, BEDDING, OR HATS, RIBBONS, SCARVES AND COATS. If these items are shared by family or friends, everyone in contact may become infested. Lice may be spread by sharing a bed at a sleepover or by resting your head against the back of a seat on a bus or airplane, in a movie theater, or other waiting rooms. Trying on clothes or hats at the mall may spread head lice.

East Allen County Schools will generally not inform parents/legal guardians of a classroom or grade level that a case of head lice has been found as it infringes on the privacy of the student involved (FERPA). Upon finding a suspected case:

1. The child's parent/legal guardian will be contacted by the school.
2. Parent/legal guardian is required to pick-up the child from school; the nurse or UAP should show the suspected lice or nits to the parent/legal guardian.
3. Upon request by the parent/legal guardian the nurse or UAP may check other family members for head lice. Classmates (defined as a group of students who spend most or all of the school day together in the same classroom), and other close contacts may be checked for head lice at the discretion of the school nurse.
4. Infested children must be treated at home, using a lice shampoo according to package directions or as prescribed by a physician.
5. The parent/legal guardian must accompany the child to school the next school day. The parent/legal guardian must remain at school until the nurse or UAP has rechecked the child. The child must be free of live lice before he/she will be allowed to remain at school.
6. Exclusion for lice should not be used to miss school for an extended period of time. Therefore, the school may enforce disciplinary action as deemed necessary by the school's administrative staff.
7. *The parent/legal guardian has the ultimate responsibility to ensure their child is free of live lice and viable (live) nits. The parent/legal guardian is responsible for the care of their child's scalp and hair.*
8. *The parent/legal guardian should carefully check their child's scalp and hair once each week. Many people think that itching is a good indicator of the presence of head lice. However, the first infestation may produce NO symptoms for 4 to 6 weeks.*

Ask your school nurse for the complete EACS Head Lice Policy.

# Immunization Information...

In order to safeguard all school aged children and young adults, Indiana State Law requires that students must have completed or be up to date on certain immunizations before attending school.

## School immunization requirements for kindergarten entry:

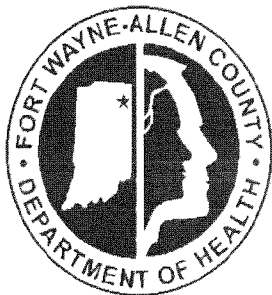
- 5 - DTaP/DPT/DT (Four doses of DTaP/DPT/DT are acceptable if the 4<sup>th</sup> dose was administered on or after child's 4<sup>th</sup> birthday).
- 2 - Hepatitis A
- 3 - Hepatitis B
- 2 - MMR
- 4 - Polio (Three doses of polio vaccine are acceptable if 3rd dose was administered on or after child's 4<sup>th</sup> birthday and at least 6 months after the previous dose with only one type of vaccine used).
- 2 - Varicella (Chickenpox) *OR* Physician documentation of disease history, including month and year.



If you have further questions about what immunizations are required please call your health care provider or school nurse.

*If proof of the required immunizations is not on file with the school, your child may be excluded from school.*

See your health care provider for needed immunizations or you may go to:



The **Allen County Department of Health**, located at 4813 New Haven Avenue, at the corner of New Haven and Meyer Road, offers immunizations. Vaccinations are given by appointment only. There is an administration fee per vaccination. Clients who have insurance that pays for vaccines will also have to pay the cost of the vaccine. Medicaid is accepted. When making an appointment, the approximate costs will be given. Call 449-7514 to schedule an appointment or for additional information. *An adult (parent/legal guardian) must accompany the child and bring the child's shot record.*

**Super Shot** also offers immunizations at various Allen County. There is a \$10 fee per shot; Medicaid is be turned away due to inability to pay. *Your child's and he/she must be accompanied by a parent or legal attached schedule or call 424-7468.*



locations throughout accepted. No one will *shot record is required guardian. See*

**Immunization objection based on religious beliefs or a medical condition** will satisfy state requirements; however, the parent or guardian must complete and sign an **Immunization Exemption Form** (Hs-1a) annually with a physician's signature also required for **Medical Objection**. *If there is an outbreak of a communicable disease at school, your child may be excluded from school.*



It's for Kids! It's for You! It's for Life!

# 2017 Family Immunization Clinic Immunizations for Children and Adults

Call 260-424-7468 (SHOT) or visit our website: [supershot.org](http://supershot.org)



### Renowned Sponsors

- Edward D. and Ione Auer Foundation
- Community Foundation of Greater Fort Wayne
- DuPont Hospital-Lutheran Health Network
- English, Bonter, Mitchell Foundation
- Foellinger Foundation
- Charles W. Kuhne Charitable Foundation
- Lutheran Hospital-Lutheran Health Network
- M. E. Raker Foundation
- Magee-O'Connor Foundation
- Parkview Hospital Community Health Improvement Program
- Parkview Physicians Group (PPG)
- St. Joseph Hospital-Lutheran Health Network
- Sledd Foundation
- The Edward M. & Mary McCrea Wilson Foundation
- Zollner Foundation

### Acclaimed Sponsors

- Howard P. Arnold Foundation
- Fast Print
- Fort Wayne Medical Society Foundation
- Fort Wayne Pediatrics
- iAB Financial Bank
- Journal Gazette Foundation
- Lake City Bank
- Lincoln Pedic Clinic
- NIPSCO
- Parrish Leasing, Inc.
- Owen and Jean Pritchard Charitable Foundation
- Ian and Mimi Rolland Foundation

### Distinguished Sponsors

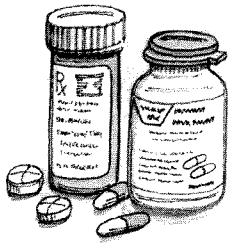
- Black Pine Animal Sanctuary
- Crazy Pinz
- Do It Best
- Georgetown Bowl
- Komets
- McDonald's
- MedPro Group
- Putt-Putt Golf
- Karla and Kevin Rahn
- Science Central
- Targeted Services, P.C.
- The Fort Medical Society Alliance
- Tokens-N-Tickets

	mon	tues	wed	thurs	fri	sat
<b>1st week of the month</b>	Grabill Missionary Church Super Shot Clinic 13637 State St., Grabill 10am-1pm	Parkview Hospital Super Shot Clinic 1818 Carew St., Ft. Wayne 10am-1pm 4pm-7pm	St. Joseph Hospital Super Shot Clinic at Anthony Medical Ctr. 5717 S. Anthony Blvd. 4pm-7pm	St. Joseph Hospital Super Shot Clinic at Anthony Medical Ctr. 5717 S. Anthony Blvd. 10am-1pm ----- Parkview Hospital Super Shot Clinic 1818 Carew St., Ft. Wayne 4pm-7pm	<b>No Clinic</b>	Parkview FirstCare Super Shot Clinic 3909 New Vision Dr. 9am-12pm
<b>2nd week of the month</b>	Grabill Missionary Church Super Shot Clinic 13637 State St., Grabill 10am-1pm	Parkview Hospital Super Shot Clinic 1818 Carew St., Ft. Wayne 10am-1pm 4pm-7pm	St. Joseph Hospital Super Shot Clinic at Anthony Medical Ctr. 5717 S. Anthony Blvd. 4pm-7pm	St. Joseph Hospital Super Shot Clinic at Anthony Medical Ctr. 5717 S. Anthony Blvd. 10am-1pm ----- Parkview Hospital Super Shot Clinic 1818 Carew St., Ft. Wayne 4pm-7pm	<b>No Clinic</b>	Parkview FirstCare Super Shot Clinic 3909 New Vision Dr. 9am-12pm
<b>3rd week of the month</b>	Grabill Missionary Church Super Shot Clinic 13637 State St., Grabill 10am-1pm	Parkview Hospital Super Shot Clinic 1818 Carew St., Ft. Wayne 10am-1pm 4pm-7pm	St. Joseph Hospital Super Shot Clinic at Anthony Medical Ctr. 5717 S. Anthony Blvd. 4pm-7pm	St. Joseph Hospital Super Shot Clinic at Anthony Medical Ctr. 5717 S. Anthony Blvd. 10am-1pm ----- Parkview Hospital Super Shot Clinic 1818 Carew St., Ft. Wayne 4pm-7pm	<b>No Clinic</b>	Parkview FirstCare Super Shot Clinic 3909 New Vision Dr. 9am-12pm
<b>4th week of the month</b>	Grabill Missionary Church Super Shot Clinic 13637 State St., Grabill 10am-1pm	Parkview Hospital Super Shot Clinic 1818 Carew St., Ft. Wayne 10am-1pm 4pm-7pm	St. Joseph Hospital Super Shot Clinic at Anthony Medical Ctr. 5717 S. Anthony Blvd. 4pm-7pm	St. Joseph Hospital Super Shot Clinic at Anthony Medical Ctr. 5717 S. Anthony Blvd. 10am-1pm ----- Parkview Hospital Super Shot Clinic 1818 Carew St., Ft. Wayne 4pm-7pm	<b>No Clinic</b>	Parkview FirstCare Super Shot Clinic 3909 New Vision Dr. 9am-12pm
<b>5th week of the month</b>	Grabill Missionary Church Super Shot Clinic 13637 State St., Grabill 10am-1pm	Parkview Hospital Super Shot Clinic 1818 Carew St., Ft. Wayne 10am-1pm 4pm-7pm	St. Joseph Hospital Super Shot Clinic at Anthony Medical Ctr. 5717 S. Anthony Blvd. 4pm-7pm	St. Joseph Hospital Super Shot Clinic at Anthony Medical Ctr. 5717 S. Anthony Blvd. 10am-1pm ----- Parkview Hospital Super Shot Clinic 1818 Carew St., Ft. Wayne 4pm-7pm	<b>No Clinic</b>	Parkview FirstCare Super Shot Clinic 3909 New Vision Dr. 9am-12pm

### What you should know before visiting Super Shot:

- Shot record required at every visit. • We are a walk in clinic, first come, first served basis. • Children must be accompanied by a parent or legal guardian. • We serve Medicaid, uninsured and under-insured children from birth through 18 years of age. • We serve uninsured and underinsured adults. • There is an \$10 fee per shot; Medicaid is accepted. • No one will be turned away due to inability to pay.

For updates, follow us on



## *When medication is required during school hours...*

### **STUDENT SAFETY is a PRIORITY and maintained by following the EACS Medication Policy**

**ALL medication** brought to school MUST be taken to the clinic and dispensed by the nurse (RN), Health Care Aide, or a trained staff member serving as an **Unlicensed Assistive Personnel (UAP)**.

**NO medication** is given to a student by a Health Care Aide or UAP until the medication has been identified and logged by the school nurse.

**ALL medication** given at school must have a completed and signed **STUDENT MEDICATION PERMIT** on file. The permit must be dated and signed by the parent or guardian with the student's name, name of medication, and dose and time the medication is to be given.

**ALL** prescription and non-prescription (or over-the-counter) **medication** must be in the original, correctly labeled container.

Medications are given **exactly as directed on the bottle**. Any changes must be verified in writing by the physician and may be faxed or sent to school.

Please ask the pharmacist for a "school bottle" for long-term or daily medication for use on **field trips**.

**Short-term medication**, such as antibiotics ordered three times a day, can be given before school-after school-and at bedtime. If the physician wants the medication given at school he/she may fax or send a note to school.

**All "as needed" medications**, such as Tylenol and Advil, may be given by other trained staff (Health Care Aides or UAPs) only after appropriate assessment by the RN.

Sending **Aspirin** to school is discouraged as it has been linked with Reye's syndrome. Though aspirin is approved for use in children older than age 2, children and teenagers recovering from chickenpox or flu-like symptoms should never take aspirin.

**Herbal medication, vitamins, essential oils and dietary supplements** must have an **HERBAL-VITAMIN-ESSENTIAL OILS-DIETARY SUPPLEMENT PERMIT** signed by the physician with written instructions.

**Inhalers for asthma** will be kept in the school clinic, unless there are specific instructions signed by the physician explaining that the medication needs to be with the student at all times.



**When a child has allergies (i.e. bee sting or peanut/food allergy) that may result in an *emergency situation* the parent or guardian must provide the necessary emergency medication(s) (EpiPen, Benedryl) for use at school.**



**Sending medication home from school...**Medication may be released only to the student's parent or an individual who is at least eighteen (18) years of age and designated in writing by the student's parent or guardian to receive the medication. Medication may be sent home with the student if the student's parent or guardian provides written permission for the student to receive the medication.



## **EACS School Nurse Directory**

The EACS Registered Nurses are available should you have a question or concern about your child's health and safety needs. If your building's nurse is not available to talk with you, please call an attendance area nurse. If she cannot answer your question, you will receive a call with an answer within 24 hours.

### **Abby Koroncevicius, Health Services Coordinator      446-0100 extension 7309**

<b>Heritage Jr-Sr High School</b>	Abby Koroncevicius	446-0140 extension 7008
Heritage Elementary	Angie Bickel	446-0160 extension 5204

<b>Leo Jr-Sr High School</b>	Amber Sieber	446-0180 extension 7111
Leo Elementary	Darlene Saxton	446-0170 extension 5304
Cedarville Elementary	Londa Graber	446-0110 extension 4904

<b>New Haven Senior High School</b>	Jeanetta Troyer	446-0220 extension 7217
New Haven Middle		446-0230 extension 6010
New Haven Intermediate	Brittany Hertig	446-0190 extension 5404
New Haven Primary	Julie Pease	446-0150 extension 5104

<b>Paul Harding Jr. High School &amp; East Allen University</b>	Vicki Dilley	446-0240 extension 7309
Prince Chapman Academy	Janice Dodane	446-0270 extension 6408
Southwick Elementary	Kaitlin Yoder	446-0250 extension 5704

<b>Woodlan Jr-Sr High School</b>	Leonda Stieglitz	446-0290 extension 7407
Woodlan Elementary		446-0280 extension 5904